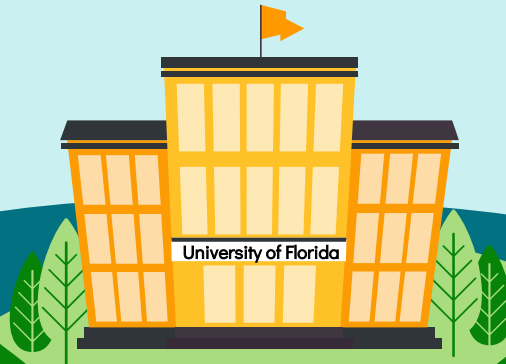


ASABE: University of Florida Chapter



Let Us Introduce Ourselves!



President



**Vice
President**



Treasurer

Let Us Introduce Ourselves!



Secretary

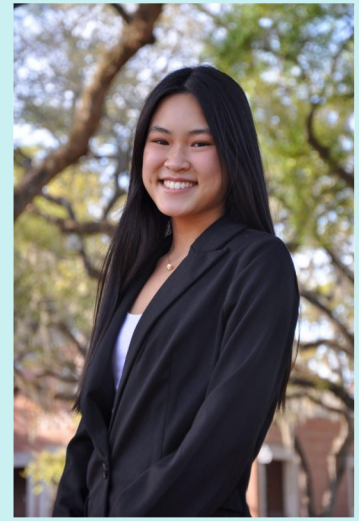


Historian



BEC Rep.

Let Us Introduce Ourselves!



UF ASABE Student Chair Position Holders

Club Involvement

Guest Speakers:

- Representative from UF Robotics
- Recruiter from Cold Keepers
- Anheuser-Busch Affiliate Alumni



Club Involvement

Tabling And Service Events:

- Florida Farm Bureau
- Siembra Farms
- UF ABE Career Fair
- Joint ASABE + Packaging Meeting
- Resume Workshop

Club Involvement

Future Involvement:

- Fountain Wars
- Florida Section Meeting
- GEE DAY (Organization Fair)



Club Involvement



2017 AIM Spokane, Washington



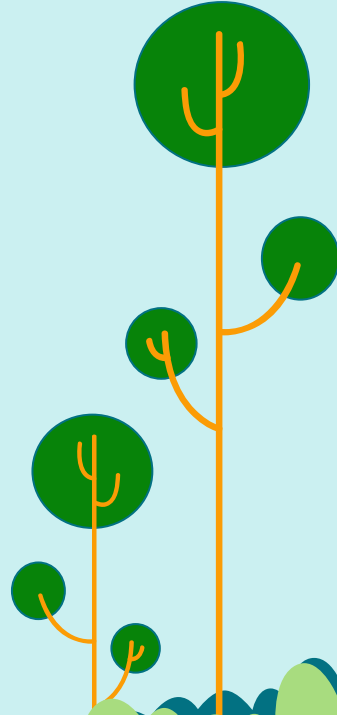
Primary Fundraising Initiative



Our ASABE T-Shirt Sale Brough in Over \$400!

Club Social Events

- Dog Park Socials
- ASABE Game Nights
- University of Florida Gator Growl Parade
- Intramural Volleyball Team
- Club Hike Sweetwater Wetlands
- Club Dinners







**Thank You for
Listening!**

NC State University ASABE

Chapter Updates
2021 - 2022



Southeastern Region Student Rally

TABLE OF CONTENTS

01

OUR VISION and OUR MEMBERS

CONNECTing through biweekly meetings and growing personal relationships.

02

BAE PACK GIVES BACK

Paying it forward is our duty.

03

INDUSTRY CONNECTIONS

Networking with industry leaders.

04

SUPPORTING OUR CLUB

Helping our Community.

C.O.N.N.E.C.T

Communication

Originality

iN-person

Nice

Enthusiasm

Collaboration

Teamwork



Member Engagement

85 Members



Committees

- Professional Development
- Social Impact
- Member Engagement
- Outreach





Grad Student and UG Internship Panels

Students talked with their peers about options for grad projects and summer internship programs.

Industry Evenings

- DragonFly Pond Works
- Farming 4 Hunger
- Earth Optics
- Merck Inc
- Town of Clayton
- John Deere
- CALS Careers
- Phinite
- RJ Reynolds
- Mc Adams



Building Community



BACK to SCHOOL BASH

Hotdogs, Hamburgers, and all smiles to be back in Weaver!



AWAY GAME TAILGATE

We raised our wofies and cheered on our pack when they played Mississippi State.

SPRING SOCIAL

An awards banquet to honor and celebrate all the achievements of the year.

The Green Chair Project

30 BASKETS
DONATED



GIVING BACK

24 BOXES DONATED

Operation Christmas Child



12 LARGE BAGS
COLLECTED



Rocky Branch Stream Clean Up

Kornegay Family Farms and Produce



Crank Arm Brewery

Industry Tours

ANNUAL FALL CAREER FAIR

28 Companies

The largest and diverse number of industry representatives EVER!

106 Pre Registered Students

Students were encouraged to register early and utilize campus resources to prepare to talk with representatives.



ANNUAL SWEETPOTATO SALE



**ASABE Sweet
Potato Fundraiser**

Step 1: Order: ➡

go.ncsu.edu/sweet-potatoes



⬅ **Step 2: Pickup:**

November 18 / 6-8:30pm

November 21 / 3-5pm.



3110 Faucette Drive

Raleigh, NC 27606

THANKS

Does anyone have any questions?

Follow the our club on social media!

ncstate_asabe



North Carolina A&T ASABE Chapter

Brooke Carter
Chapter President 2021-2022
Presented to ASABE Regional Rally
April 1st, 2022



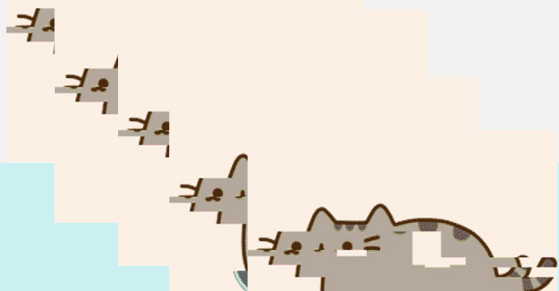
NORTH CAROLINA AGRICULTURAL
AND TECHNICAL STATE UNIVERSITY



Unable to load file

Try to load it again or [send an error report](#).

Reload



Gotcha

Eboard 2021-2022



Ahmir Williams -
Parliamentarian



Kaylen Sexton-
Secretary



Karimah Preston - Ms. ASABE



Nia Williams - Historian



Kamali Singleton -
Mr. ASABE

Member Participation

- Bi-weekly meetings attendance increase
 - > Response to in person classes
 - > NRCS mandatory attendance
- 10 hours community service mandate
- Group Events

Goal for the 2021-2022: **Bring back the family environment and maximize involvement.**

Professional Development

- Preparation for school-wide Career Fair
- Career Path Informational
- Guest Speakers
 - > Dr. Kirk Durant, PhD from Syngenta
 - > NASA's Devon Geron
 - > Charles Sterling, PhD program at Virginia Tech
- Various company and university visits
 - > e.g. Mondelez International, Inc.; Syngenta; USDA; Texas A&M
- North Carolina state rally
- Panel with recently graduated Alumni



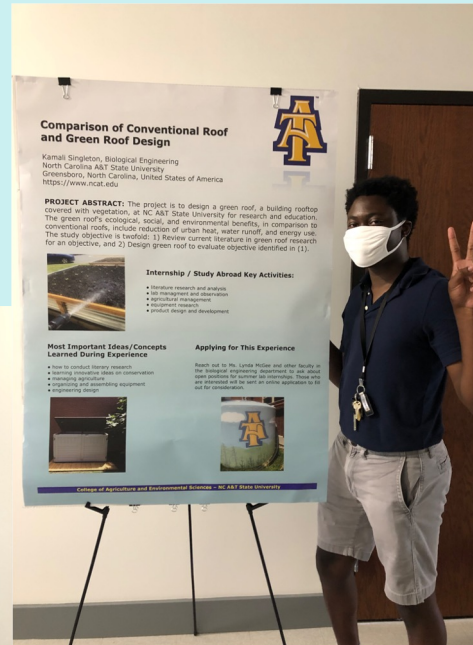
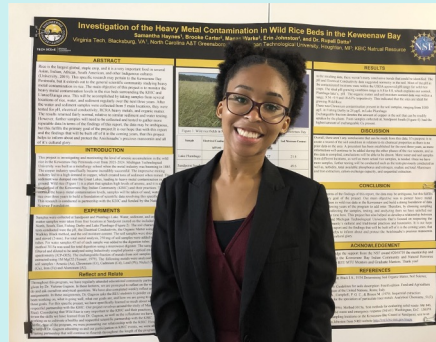
Volunteer Events

- ASPCA and Petco partnered event
- Sockwell Clean Up
- Garden Improvement
- Graduate Student Project Involvement
- Pond Clean Up



Acknowledgement of Student Accomplishments

- CAES Scholars
- Internships and Research Experiences
- Recognition of Senior Design projects



Community Outreach

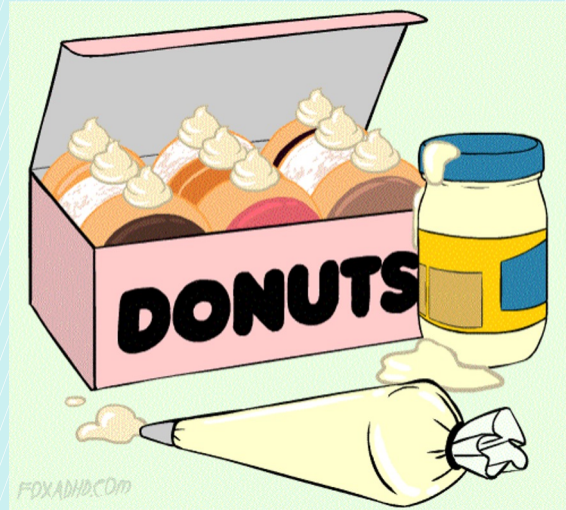
- Volunteering at local and previously attended elementary schools
 - > Creating awareness of Biological Engineering at a young age
- Speaking to local, interested high schoolers about our University's Program
 - > Beginning recruitment
- Involvement in our University's Community
 - > Recycling program and reducing our carbon footprint
 - > Engineering and Agricultural Sciences Colleges
- Encourage volunteering school wide and in the Greensboro area

Social Events

- Wreck Stress
- Movie Marathon Nights
- Friendsgiving
- Earth Day
- Kayaking



Thank you for listening!
**Any questions, thoughts or
concerns?**





2021-
2022

THE UNIVERSITY OF
TENNESSEE
KNOXVILLE



FALL 2021



Goals

- Increase members
- Welcoming environment
- Add value to membership



EF DEPARTMENT FAIR



BSE MIXER



ENGINEER'S DAY



SOIL JUDGING VOLUNTEERING



PUMPKIN CARVING



DINNER AT BARLEY'S

Spring 2022



GUEST SPEAKERS



Dr. Julie
Carrier
Professor & Head



Dr. Daniel Yoder
Professor & Assistant
Department Head



Dr. Nour Abdoulmoumine
Assistant Professor



LAWNMOWER CLINIC

What's Next

- Brewery Tour
- Earth Day Volunteering
- End of Year Department Cookout

THANK YOU!



ASABE at Virginia Tech

Southeast Student Rally

April 1, 2022





Kendall Staunton

President

Henry Presman

Vice President





Lindsay Stamenkovich

Treasurer

Dr. Jonathan Czuba

Faculty Advisor





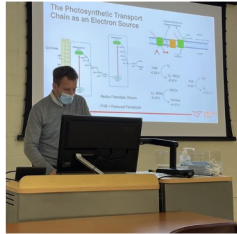
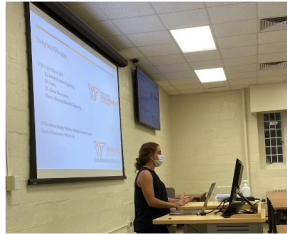
Recruiting freshman at
CEED's O-Show in August





Professional development meetings

- Resume/elevator pitch workshops
- Student research/internship presentations
- Professor research presentations





Volunteering throughout Blacksburg

- StREAM Cleanup
- Leaf Raking
 - Raised over \$800 for the chapter



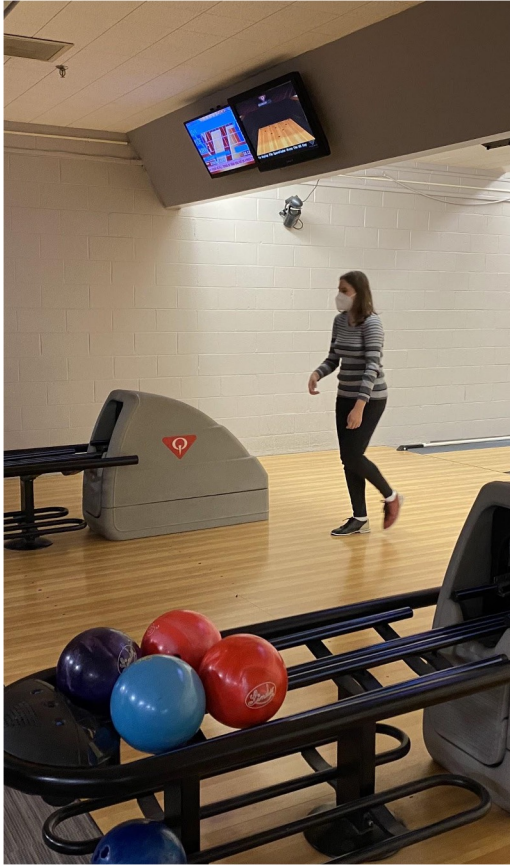
Henry's celebratory front flip



Socials

- Pig roast
- Pumpkin carving
- Professional headshot photos







Professional development meetings

- Art of the Interview workshop
- Financing After College workshop
- Rally info session



Coming up....

- StREAM Cleanup
- Dinner at Eastern Divide Brewing Company



Nicole Chapman

Winner of the ASABE
2022 Robert E. Stewart
Engineering-Humanities
Award

A photograph of a large, multi-story brick building with a central entrance. The building is surrounded by green grass, trees, and shrubs. A paved road runs along the front of the building. The text "UGA ASABE" is overlaid in large, red, serif font across the center of the image. The entrance of the building has a sign that reads "PRIETTER ENGINEERING CENTER".

UGA ASABE

PRIETTER ENGINEERING CENTER



Matthew Bowen
President

Agricultural Engineering
Mechanical Emphasis



Garlon Rogers
Vice President

Agricultural Engineering
Structural Emphasis



Hunter Defore
Treasurer

Agricultural Engineering
Structural Emphasis



Seth Daniels
Social Chair

Agricultural Engineering
Structural Emphasis

General Body Meetings

- As a club we focus on the importance of gaining real world experience and building relations with those that have excelled in the engineering field.
- Over the course of this year we have had many great guest speakers:
 - **Jared Mock P.E.**, Maxwell Reddick and Associates
 - **Michael Czarick**, UGA Extension Engineer
 - **Benny Branch**, President of Kelly Manufacturing Company
 - **Avery Rogers**, Hodges, Harbin, Newberry & Tribble
 - **Aaron Williams**, Kubota



UGA Homecoming Float

- With the dedication and hardwork of ASABE and our fellow College of Engineering students and staff, we built the College of Engineering homecoming float.
- UGA ASABE gladly leads this project every year.



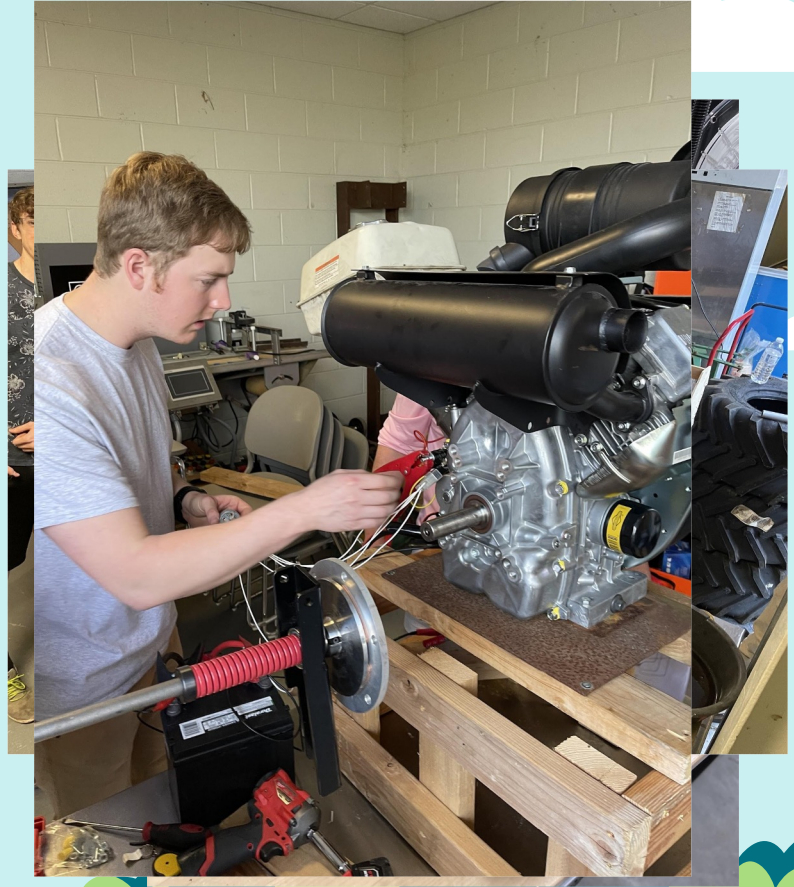
Philanthropy

- Extra Special People (ESP) is a local organization that teams up with students to help give individuals with disabilities and their families a transformative experience and focus on their abilities, rather than their disabilities.
- UGA ASABE enjoys raising money for ESP every year.



1/4 Scale Tractor

- The 1/4 Scale Tractor Competition provides hands on learning, paired with technical skills learned in the classroom.
- Our Tractor Team has worked diligently to design & manufacture the first tractor UGA will have successfully completed.



Tractor Team Leads



Hudson Barber
Design Team Lead



Daniel Phillips
Manufacturing Team
Lead



Guy Gober
Design Documentation Lead

GA Peanut Conference

- In January, members of ASABE had the opportunity to travel to Tifton, GA and represent the UGA College of Engineering at the annual Georgia Peanut Conference.



AG Day at Tate

- During National Agriculture Week, our President and Vice President of ASABE had the opportunity to represent the Agricultural Engineering program at UGA.
- We were stationed at the Tate Student Center, along with UGA's many other fantastic agriculture organizations, and enlightened fellow students on the new innovations and benefits agriculture brings to our society.



UGA College of Engineering

- 97% Career Placement
- Enrollment of 2,414 students
- A premier engineering program in a comprehensive land-grant university
- Nine M.S. Engineering Programs
- Four P.H.D Programs
- 4th Largest College at UGA
- Engineering has been taught at UGA since 1830



National Champs!

- UGA ASABE has had an excellent year, as well as our football team. Big shout out to the Bulldogs for making our year even better!

GO DAWGS!





Clemson University Biosystems Engineering



College of
ENGINEERING, COMPUTING
AND APPLIED SCIENCES



About Us

Energetic
Ingenuitive
Thoughtful

Community Service
Professional Development
Social Bonding



Academic Activities

- Internships, Co-ops, and Academic Research
- Creative Inquiries
 - Oyster Reef Restoration
 - Algae Carbon Capture
 - Hydrogen from Waste Peaches
 - Aquaponics
- Capstone Senior Design
 - PFAS Removal
 - Water Treatment
 - Phytoremediation



Achievements and Professional Development

- J.T. Barton Jr. Award from the Rutland Institute for Ethics
 - Panel on the Ethics of Fast Fashion
- Over 90% pass rate for the FE Exam
- Most Spirited 2018!
- Rally-At-Home 2021
- Networking
 - Career Fairs
 - Clemson Hydrogeology Symposium





Our Service

- Adopt-A-Highway
- Adopt-A-Stream
- Clemson Football Gameday Recycling



ENGINEERING, COMPUTING
AND APPLIED SCIENCES

Social Engagement

- Brewery Tour
- Bonfires
- Fundraisers
- Intramural Sports
- Second Hand Clothing Formal





 *Thank You* 





FLORIDA A&M UNIVERSITY

ASABE

2022

Southeastern

Regional ASABE

Rally

FAMU ASABE GENERAL BODY

- ▶ Biweekly General Body meetings, Weekly Officer meetings
- ▶ Professionalism and Leadership Development
- ▶ Fundraising
- ▶ Strengthening from the Inside



Professionalism

FE Prep Mondays

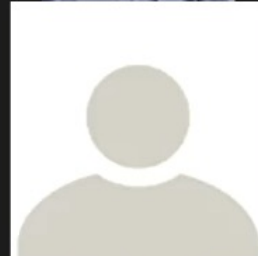
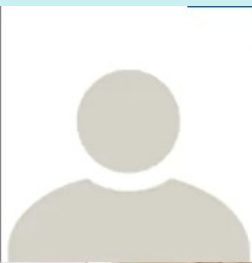
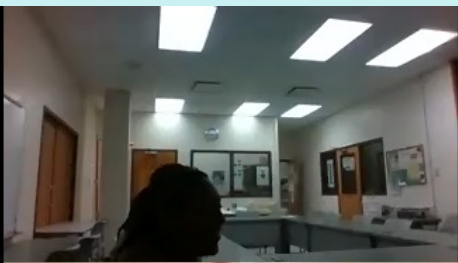
Engineering Panel

Career success seminar – Mr. Montgomery

How to Patent – Dr. Charles Magee

Proctor and Gamble – Jeniva St. Phar







Fundraising

Virtual Gift card raffle



**NIGHT OUT+
SHOPPING SPREE
ON US!**

1/\$2 AND 3/\$5 RAFFLE
NOW-WEDNESDAY, MARCH 9TH

 **\$FAMUASABE** Or buy a ticket from a member  **@FAMU_ASABE**

Social

- Game night
- Annual Christmas Party
- Bowling night

